

Kennzeichnung der Anschlüsse nach: DIN ISO 6786
 Designation of connection ports according to: DIN ISO 6786
 Designation des raccords selon: DIN ISO 6786
 Designazione dei raccordi secondo: DIN ISO 6786

- 1= Energiezufuss
Energy inlet
Alimentation
Alimentazione
- 21= Energieabfluss (Betriebsbremskreis 1)
Energy outlet (service brake circuit 1)
Sortie du fluide (circuit de frein de service 1)
Uscita (frenatura di servizio circuito 1)
- 22= Energieabfluss (Betriebsbremskreis 2)
Energy outlet (service brake circuit 2)
Sortie du fluide (circuit de frein de service 2)
Uscita (frenatura di servizio circuito 2)
- 23= Energieabfluss (Anhänger- und Feststellbremse Kreis 3)
Energy outlet (trailer and parking brake circuit 3)
Sortie du fluide (de frein de remorque et de stationnement circuit 3)
Uscita (freno rimorchio e di stazionamento circuito 3)
- 24= Energieabfluss (Nebenverbraucher Kreis 4)
Energy outlet (auxiliary devices circuit 4)
Sortie du fluide (servitudes circuit 4)
Uscita (servizi ausiliari circuito 4)

- 3= Entlüftung
Exhaust
Échappement
Scarico

Thermischer Anwendungsbereich: -40°C bis +80°C
 Temperature range of operation: -40°C to +80°C
 Plage de température: -40°C à +80°C
 Campo termico di applicazione in funzionamento: -40°C a +80°C

Thermischer Anwendungsbereich (max. 60min, ohne Funktion): +100°C
 Resistance to heat (max. 60min, w/o function): +100°C
 Résistance à la chaleur (max. 60min, sans fonctionnement): +100°C
 Resistenza al calore (max 60 min non in funzionamento): +100°C

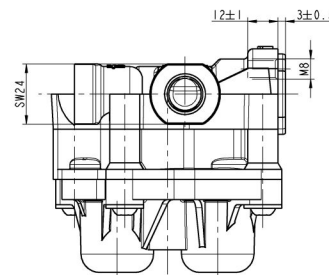
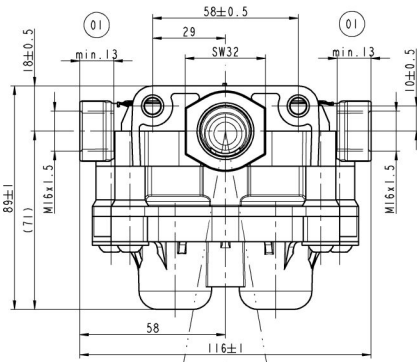
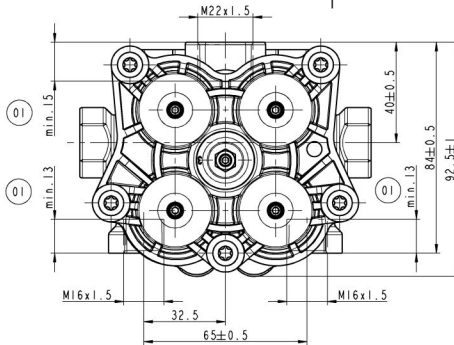
Medium: Luft
 Medium: air
 Milieu: air
 Mezzo: aria

Nennweite: >> min. Ø6.5
 Nominal width: >> min. Ø6.5
 Passage nominale: >> min. Ø6.5
 Diametro nominale: >> min. Ø6.5

Betriebsdruck: 13 bar
 Operating pressure: 13 bar
 Pression de service: 13 bar
 Pressao de servizio: 13 bar

Max. Betriebsdruck (Kurze Zeit): 20 bar (Überdruck)
 Max. operating pressure (short time): 20 bar (gauge)
 Pression de service max. (courte temps): 20 bar (pression relative)
 Pressao max. de servizio (breve tempo): 20 bar (Pressao relativa)

Zulässige Undichte bei 10 bar Betriebsdruck: Vn<=10 Ncm³/min.
 Permissible leakage at 10 bar operating pressure: Vn<=10 Ncm³/min.
 Fuite admissible pour pression de service 10 bar: Vn<=10 Ncm³/min.
 Fuga ammissibile a pressione d'esercizio 10 bar: Vn<=10 Ncm³/min.



Einbaulage
 Installation position
 Position de montage
 Posizione di montaggio

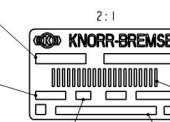
Toleranzen					
Nominalmasse in mm					
<=6	>6	>30	>80	>120	>315
+0.5	+0.5	+0.8	+1	+1.5	+2

Max. Anziehdrehmoment fuer Anschlussgewinde nach Max. tightening torque for connecting thread to Couples de serrage max. pour raccordement fileté selon Coppie di serraggio max. per filettatura di raccordo secondo		DIN 3853
M10x1	M12x1.5	25Nm
M14x1.5	M16x1.5	35Nm
M18x1.5	M22x1.5	45Nm
M26x1.5	M26x1.5	50Nm
		60Nm
		90Nm

01 Selbstklebendes Typenschild mit Schutzfolie
 Adhesive label with protection film
 Etichetta adesiva con la pellicola di protezione
 Étiquette adhésive avec le feuille de protection

Typ Number
 Type number
 No. di tipo
 No. de type

Herstelldatum
 Production date
 Date de production
 Donnée de fabrication
 z.B./for example/
 par exemple/per esempio: 11435
 11 - Jahr/Year/année/anno: 2011
 43 - KW/CW/semaine de L'année/
 settimana dell'anno: 43
 5 - Tag/day/jour/giorno (1-7)



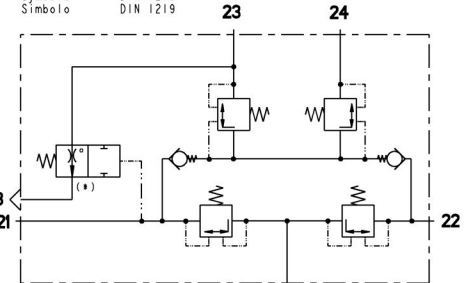
Werk
 Production place
 Luogo di produzione
 Place de fabrication

Sach Nr.
 Part number
 Numero identificativo
 No. de identification

Strichkode mit Kundennummer
 Bar code with customer number
 Codice a barre con il numero di cliente
 Code barres avec le nombre de client

Kundennummer
 Customer number
 Numero di cliente
 Nombre de client

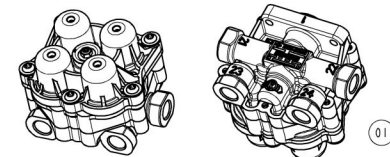
Schaltzeichen DIN 1219
 Symbol DIN 1219
 Simbolo DIN 1219
 Símbolo DIN 1219



(*) EG-Ventil:
 Fail safe valve:
 Valve de zettene de déserrage:
 Valvulo da sicurezza:

Duesengroesse Ø0.8mm max. 35 Nl/min bei 8 bar
 Nozzle size Ø0.8mm max. 35 Nl/min at 8 bar
 Buse Ø0.8mm max. 35 Nl/min à 8 bar
 Strozzatura Ø0.8mm max. 35 Nl/min a 8 bar

Anspruchdruck Kreis 21: 4 +0.5 bar; Kreis 23: 0 bar
 Threshold pressure circuit 21: 4 +0.5 bar; circuit 23: 0 bar
 Pression d'attaque circuit 21: 4 +0.5 bar; circuit 23: 0 bar
 Pressione d'attacco circuito 21: 4 +0.5 bar; circuito 23: 0 bar



1:2

KB Nummer KB Number Numero KB Numeri KB	AE4641 - K019904 (VPS41AY)				AE4642 - K019905 (VPS41BY)				AE4643 - K019906 (VPS41CY)				AE4644 - K019907 (VPS40AAY)				AE4645 - K019908 (VPS40CY)				AE4646 - K019909 (VPS45A, VPS45AY)			
	Kundennummer Customer-Number Numero de stock du client No. di ri. del cliente				Kundennummer Customer-Number Numero de stock du client No. di ri. del cliente				Kundennummer Customer-Number Numero de stock du client No. di ri. del cliente				Kundennummer Customer-Number Numero de stock du client No. di ri. del cliente				Kundennummer Customer-Number Numero de stock du client No. di ri. del cliente							
	42530049				42530050				42530051				42530048				42530047				98400429 - 500319370			
	sostituisce il 4749971				sostituisce il 61599534				sostituisce il 42079915				sostituisce il 4789811				sostituisce il 4775745							
Kreis: Circuit: Circuit: Circuito:	21	22	23	24	21	22	23	24	21	22	23	24	21	22	23	24	21	22	23	24	21	22	23	24
Opening pressure Öffnungsdruck Pression d'ouverture Pressione d'apertura	7.5 ^{+0.3}				6.6 _{-0.3}				7.0 _{-0.3}				7.0 _{-0.3}				<= 7.5				pmax 21 or 22 +10.2-0.5			
Statischer Schliessdruck: (ohne Nachförderung und bei 0 bar im defekten Kreis) Static closing pressure: (without pressure compensation, with 0 bar in the defective circuit) Pression de fermeture statique: (sans compensation des fuites, à 0 bar dans le circuit défectueux) Pressione di chiusura statica: (senza compensazione, con 0 bar nel circuito in avaria)	0 (*)	>=5.2	0	>=5.2	0 (*)	4.5 ^{+0.3}	0	4.5 ^{+0.3}	0 (*)	>=5.0	0	>=5.0	0 (*)	5.5 _{-0.5}	0	>=p'	0 (*)	4.5 ^{+0.3}	0	>=p'	0 (*)	6.5 ^{+0.3}	0	6.5 ⁺¹
	>=5.2	0	>=5.2		4.5 ^{+0.3}	0	4.5 ^{+0.3}		>=5.0	0	>=5.0		5.5 _{-0.5}	0	>=p''		4.5 ^{+0.3}	0	>=p''		6.5 ^{+0.3}	0	>=p''	
	>=5.2	0	>=5.2		4.5 ^{+0.3}	0	4.5 ^{+0.3}		>=5.0	0	>=5.0		5.5 _{-0.5}	0	5.5 _{-0.5}		4.5 ^{+0.3}	0	4.5 ^{+0.3}		6.5 ⁺¹	0	6.5 ⁺¹	
	>=5.2	0	>=5.2		4.5 ^{+0.3}	0			>=5.0	0			5.5 _{-0.5}	0			4.5 ^{+0.3}	0			6.5 ⁺¹	0		

Rev.	Revision Reference	Date	Name	Special Characteristics	Surface Treatment	Length (mm)	Scale	1:1
001	11/2009	29.07.2011	Koranyi					
000	Release	14.01.2008	Koranyi					

CAD Model No.: AE4645
 Release Process Documentation: 2028449
 Drawing Number: 001
 Sheet: 1 of 1